

Десять веков пражской архитектуры. Архитектура барокко 2/4



Troja Palace

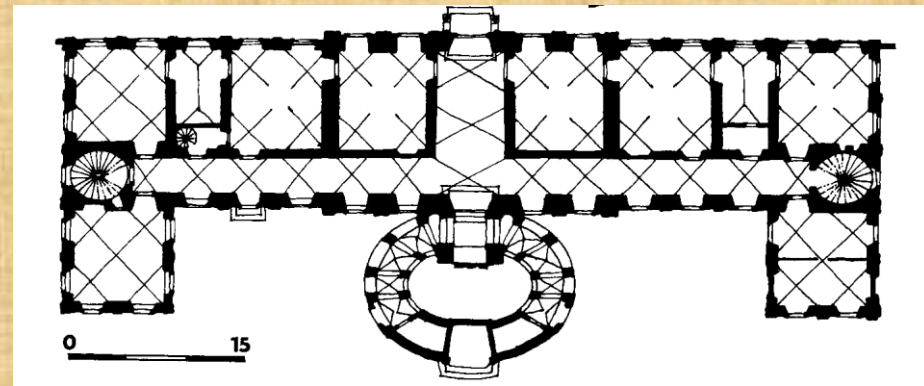


Изотов Андрей Иванович,
доктор филологических наук,
профессор МГУ им. М.В. Ломоносова

Troja Palace



Troja Palace



External oval staircase



Victory of the Olympian gods over the Titans



Busts of Roman emperors



French-type garden



French-type garden

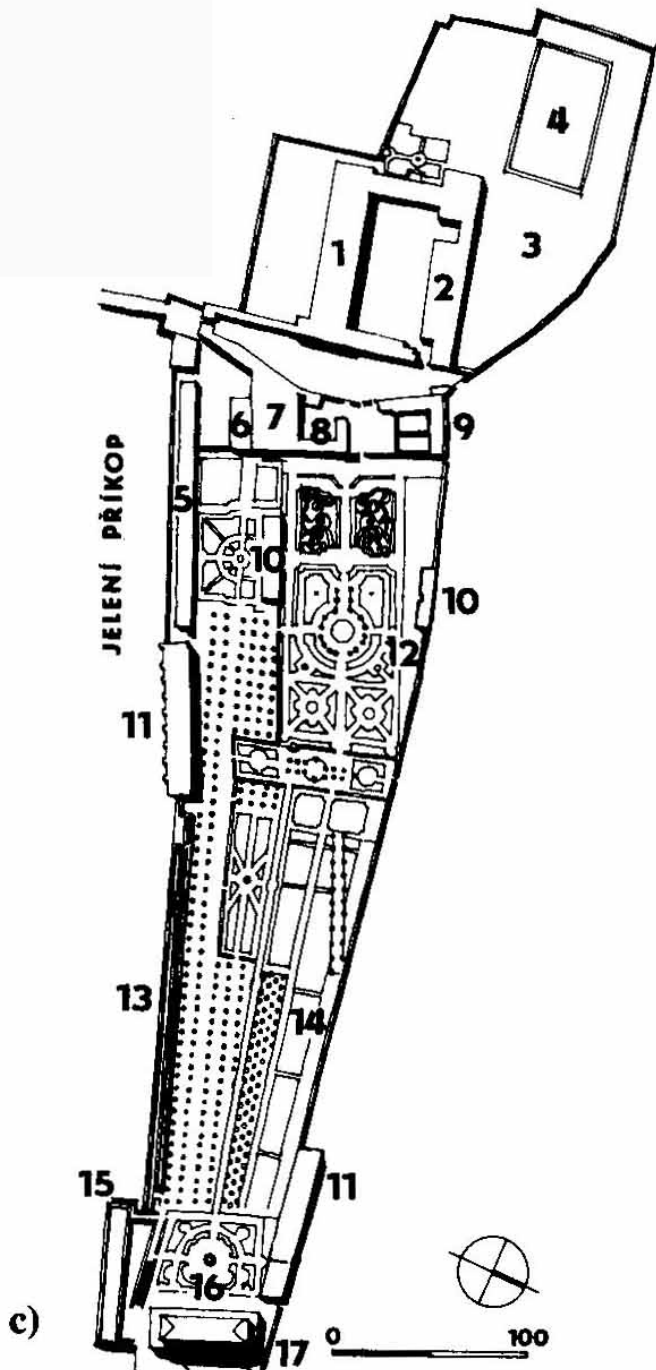


French-type garden



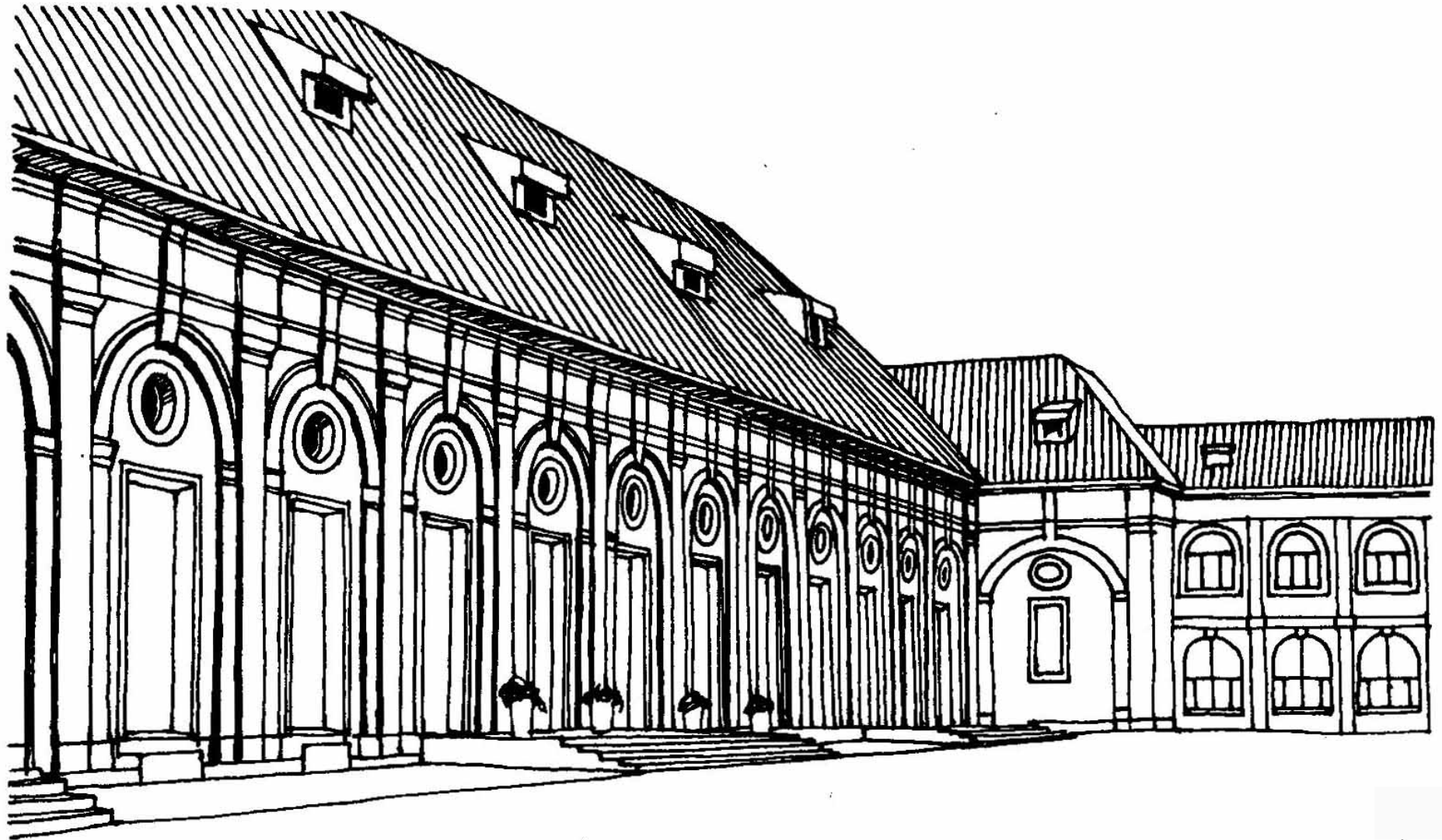
Prague Castle

Plan of Royal Garden from 1755



- 1 riding-school,
- 2 stable,
- 3 pheasantry,
- 4 pond,
- 5 stable,
- 6 small ball-game house,
- 7 Leopold I's theatre,
- 8 gardener's house,
- 9 lions' court.
- 10 greenhouses,
- 11 ball-game house (stable),
- 12 Baroque garden with Hercules Fountain,
- 13 orangery,
- 14 kitchen garden,
- 15 fig-tree garden,
- 16 Renaissance garden with Singing Fountain,
- 17 Belvedere

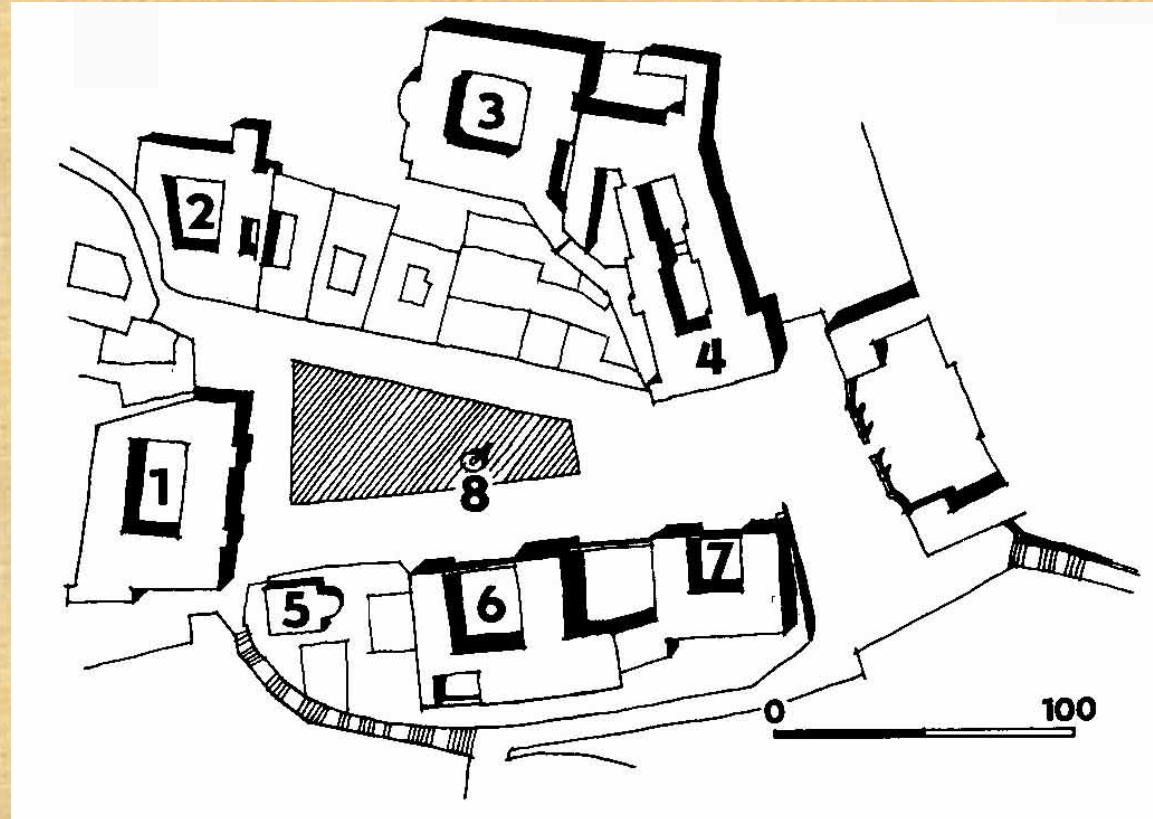
Riding-School at the Castle



Wallenstein's new riding-school



Hradčany Square

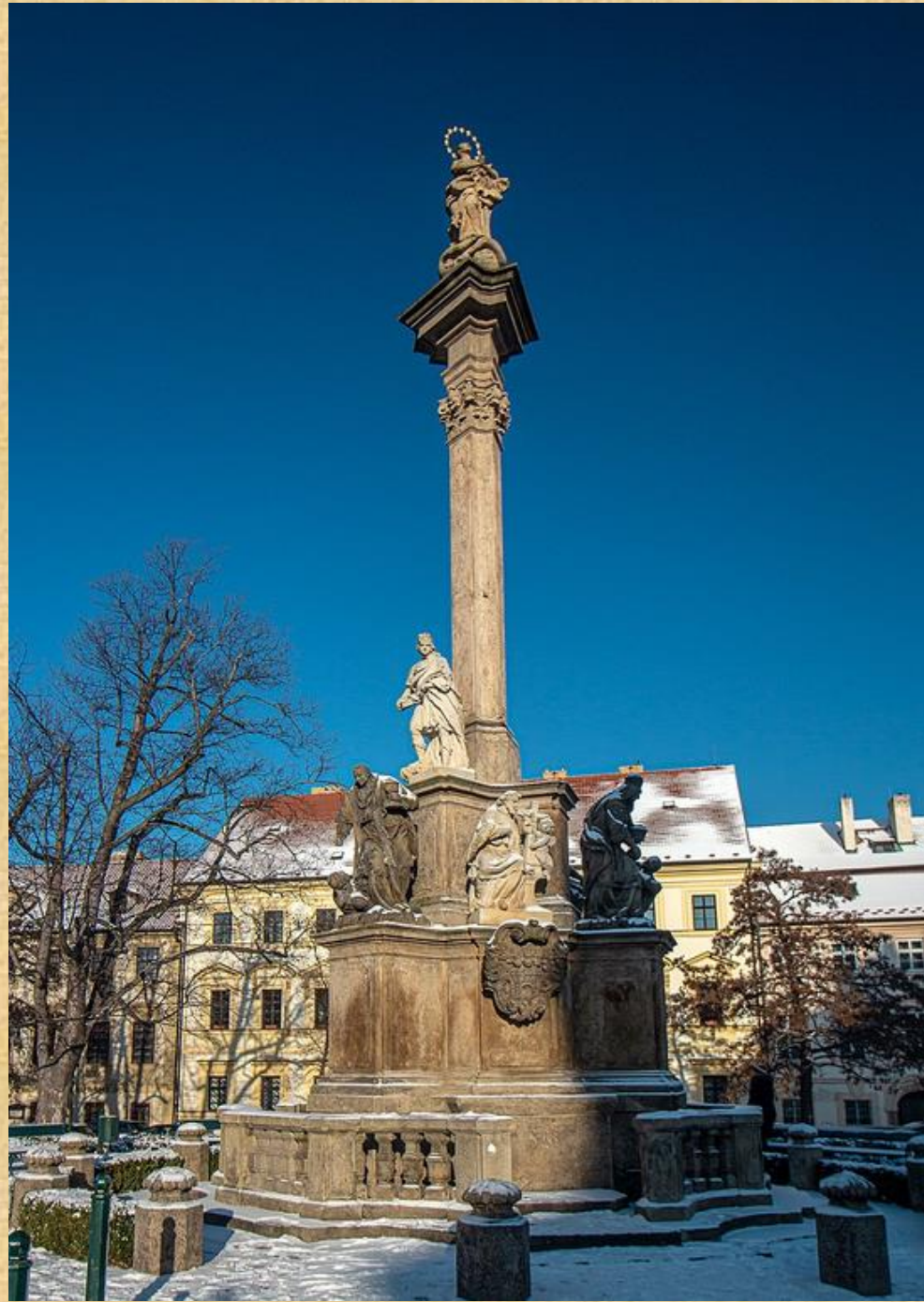


- 1 Tuscan Palace,
- 2 Martinic Palace,
- 3 Sternberg Palace,
- 4 Archbishop's Palace,
- 5 St. Benedict's Church,
- 6 Schwarzenberg Palace,
- 7 Salm Palace,
- 8 Our Lady's Column

St. Benedict's Church



Our Lady's
plague column
in Hradčany



Tuscany Palace



Archbishop's Palace



Schwarzenberg Palace



Salm (= Smaller Schwarzenberg) Palace

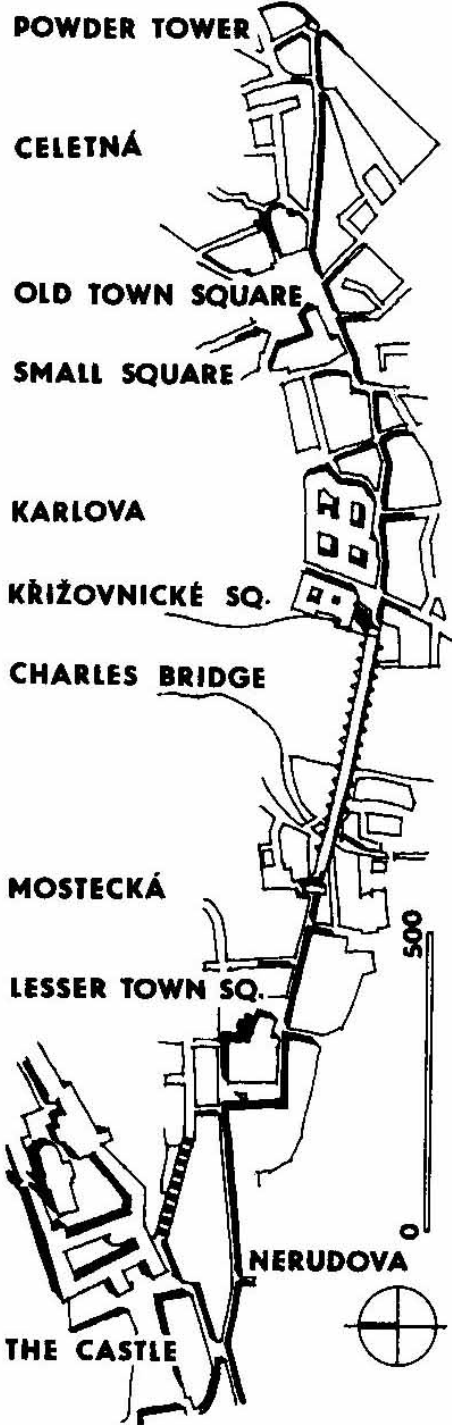


Sternberg Palace



Martinic Palace





King's Way



Church of St. Nicholas in the Lesser Quarter Square



Nerudova Street



Morzin Palace



Sculptures by Ferdinand Maximilian Brokoff



Thun Palace



New Castle Steps



Smiřický Palace



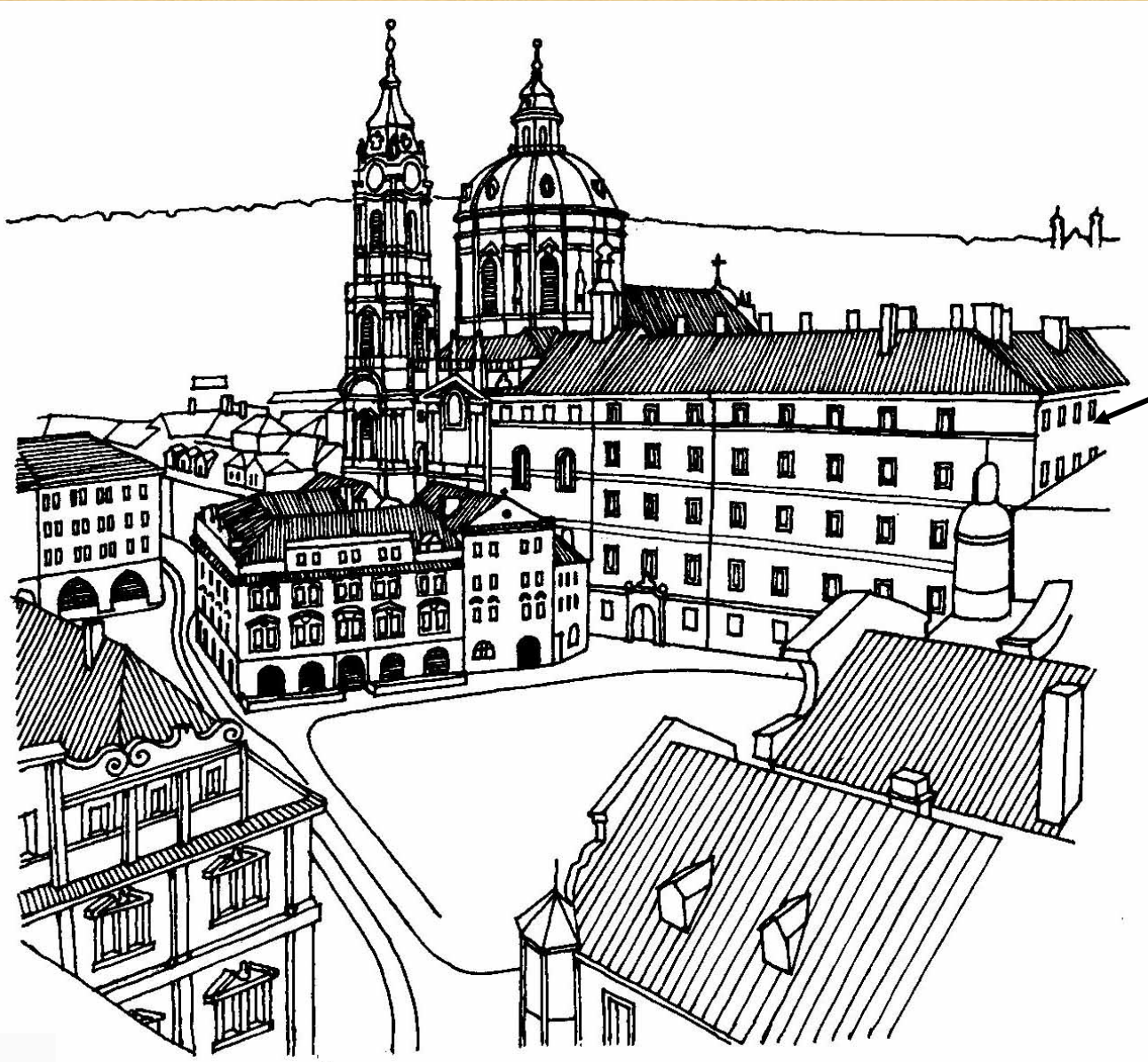




Lesser Quarter Town Hall



Lesser Quarter Square seen from St. Thomas'



former Jesuit College



The Upper Part of the Lesser Quarter Square



Liechtenstein Palace



Kaiserstein Palace



Plague column to the Holy Trinity



St. Nicholas' Church in the Lesser Quarter

































ALEXANDRI
PAPAE
STATUA

































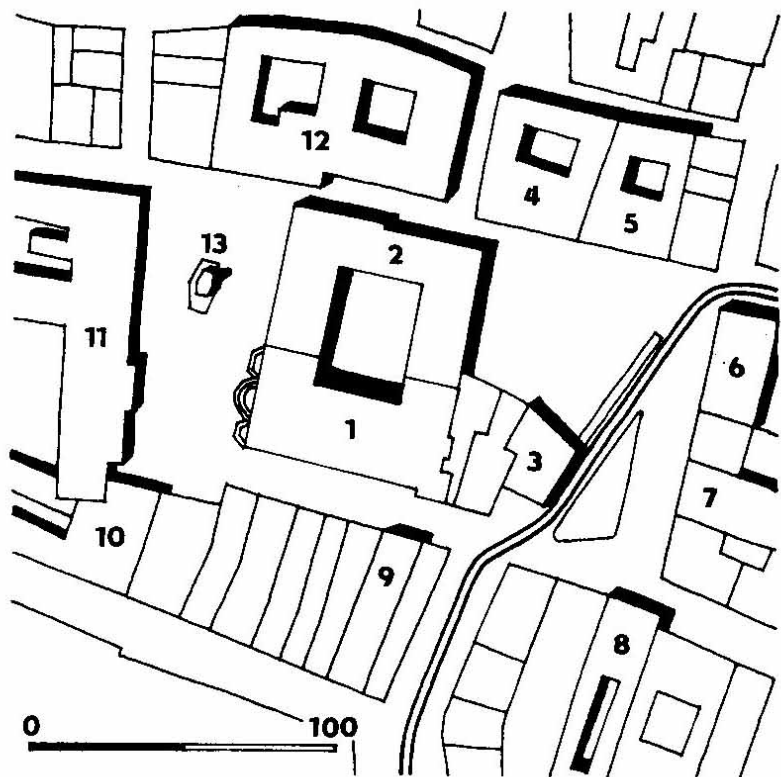








Thank you for your attention!



- 1 St. Nicholas' Church,
- 2 former Jesuit College,
- 3 house U kamenného stolu (Malostranská Café),
- 4 Smiřický house No. 6,
- 5 Sternberg Palace No. 7,
- 6 former Lesser Quarter Town-Hall,
- 7 Kaiserstein Palace, No. 37,
- 8 house U Petržilku, No. 272,
- 9 house U Glaubiců, No. 266,
- 10 Hartig Palace, No. 259,
- 11 Liechtenstein Palace, No. 258,
- 12 former Jesuit College, No. 1,
- 13 plague column with the Holy Trinity